

# Being in Control of Telekurs iD Subscriptions

In close co-operation with SIX Telekurs and Telekurs iD customers, Screen INFOMatch has developed a user-friendly, intuitive interface to SIX Telekurs' central permissioning system, which authorises Telekurs iD users around the world. The interface allows Telekurs iD customers to easily change the users' data profiles according to their needs.

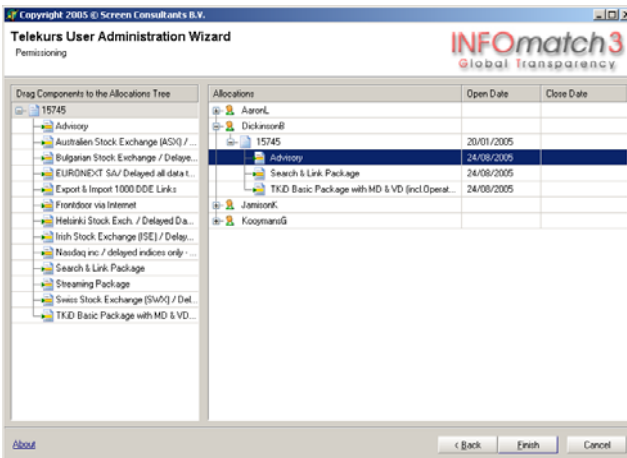
### Plug-in

Download, install and activate it on any workstation



### INFOMatch plug-in

Download, install and activate it in your INFOMatch environment



### Business benefits

- Direct access to SIX Telekurs' central permissioning system
- Abandon the paper workflow
- View permissioning profiles per user
- View the permissioned users per data component
- Easily adjust and activate data profiles, in real-time
- Optional integration with INFOMatch, allowing for optimal control and monitoring of cost and related contracts

**INFOMatch** is an innovative cost & contract management system and is used by firms in the investment management, banking, energy and commodity business around the globe. It is designed by market data specialists, who have more than 20 years of international experience, including more than 480 dealing room assignments. INFOMatch is a leading reporting and analytical market data system because of easy navigation, handling and storage of historical data and tremendous reporting facilities.

Telekurs iD is an intelligent working tool for financial industry professionals, built to a modular design and offering an array of packages to meet the requirements of the front, middle and back office alike. This allows for a high level of customisation, based upon the individual's requirements.

To manage and control the data authorisations, SIX Telekurs offers its customers access to the *userAdministrationAPI*, which is an interface to SIX Telekurs' central authorisation system. It allows the client to make on-line and off-line changes to Telekurs iD licenses and data profiles.

