

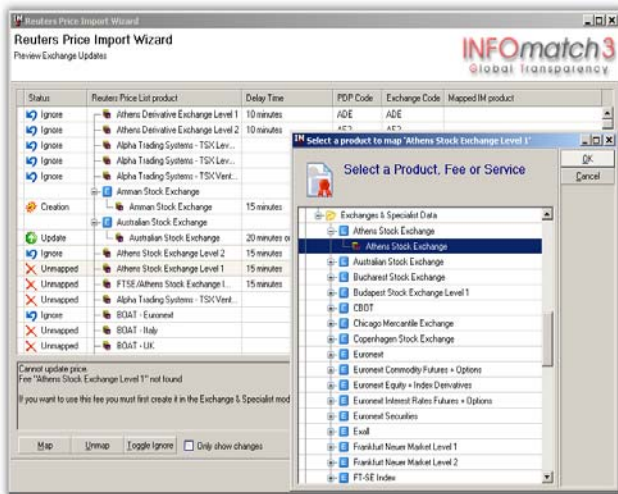
# Being in Control of Thomson Reuters' Exchange Fee Price Changes



In the market data landscape exchange fee prices are changing continuously. As a result vendors are updating their service fees accordingly.

For market data end-user firms it forms a detailed and time-consuming process to keep track of all these price changes. To simplify and speed up this process **INFOmatch** incorporates the Price Update interface for Thomson Reuters.

The interface automatically checks for exchange fee price changes by uploading Thomson Reuters' latest price list from its Secure Customer Zone into INFOmatch. From here you have the ability to directly update your Thomson Reuters' contracts with the new price information. Having actual prices stored in INFOmatch makes sure your administration is up-to-date and your Thomson Reuters invoice reconciliation process is correct. The INFOmatch Price Update interface for Thomson Reuters dramatically reduces the workload by up to 90%.



### Business benefits

- Automatically checks for Thomson Reuters' exchange fee price changes
- Guarantees you working with Thomson Reuters' latest exchange fee prices
- Allows you to select which Reuters contracts to be updated with new price information
- Direct link to Reuters' secure customer zone
- Makes sure your Thomson Reuters invoice reconciliation process is correct by using actual exchange fee prices
- Intelligent mapping of Products, Exchanges and Users
- Significant workload reduction

**INFOmatch** is an innovative cost & contract management system and is used by firms in the investment management, banking, energy and commodity business around the globe. It is designed by market data specialists, who have more than 20 years of international experience, including more than 480 dealing room assignments. INFOmatch is a leading reporting and analytical market data system because of easy navigation, handling and storage of historical data and tremendous reporting facilities.

The result: the new dimension of control!

